

Channel Men's Shed

May 2019

Social Outreach News

Members may not be aware that, as one of our many Social Outreach projects, our Shed hosts a regular dinner for BORONIA TREFOIL, a group of former Guide leaders who support the Tasmanian Guides movement.

The following from Mrs Norris:

In early April Boronia were approached by the Girl Guides Tasmania LINK organising committee asking if we would be able to help out at their Leadership weekend to be held at the Orana campsite at Roches Beach Lauderdale over the weekend 17th to 19th May. Boronia was tasked with cooking the roast dinner on the Saturday night, they must have heard about our legendary roasts for our own dinner meetings held at the Channel Mens Shed in Margate!

Trefoil members, Vicki Norris and Peggy Evans ably assisted by the CMS

President, Peter Norris took control of the kitchen at Orana mid afternoon on the Saturday and proceeded to cook up a storm, ie roast pork, lamb and chicken accompanied by roast pumpkin, sweet potato, potatoes, onions with carrots, peas, gravy and vegetarian quiche. We received many compliments from the leaders throughout the afternoon on how good it all smelt and upon serving, a number of leaders came back for seconds.

A big thank you to the Channel Mens Shed for the loan of items from their kitchen to assist us in our cooking the meal at Orana.

We had a fun afternoon, cooking and chatting with leaders as they wandered through the kitchen to see what we were up to and once the meal was under control, we sat back and enjoyed a glass of wine until service time.

Inside

Social Outreach
Administrivia
Walking Group times
Lighting improvements
Shed Talent Scout
New extension ladder bought
Premier's generous support
Garden Report
LiFE award to CMS

Briefing

Issue 1 Our support of Tasmanian Guides group

Issue 2 Miscellaneous items of importance

Issue 3 Electrical Upgrade progress report

Issue 4 Musicians wanted

Issue 5 Fire precautions

Issue 6 BBQ upgrade

Issue 7 LiFE AWARD to the Shed



Administrivia

A number of small points for this edition. Those readers who regularly have a peep at the Shed's Web-Page will be aware that, from time to time, Phil, our Webmeister, provides details of happenings around the Shed. Some of these, your editor repeats in the Newsletter. Largely because the gathering of newsworthy articles is both time consuming as well as requiring the passage of time. Odd in that there are always things happening at the Shed, perhaps our members are shy about showing off their skills. So, the time honoured request for words and pictures (and music -see

later) for inclusion is repeated here. If you want the latest information, check out the web-page. On to the admin stuff. Pictured are a couple of our gas torches and is the sad state of our collection of hole saws and grinding disks. Instead of asking our members to provide their own ...and the Committee realised that many members only have occasional need for this sort of stuff... we have added a minor appeal to the end of our CMS Usage Box listing. Payments to the Shed are, as always, a matter for members' own consciences, but the more income, the better equipped we can become.

We have also pictured what was a 15 amp three pin plug. Our resident electricians and Workplace Health and Safety gurus, had a collective conniption at this and took to the offending cable with side cutters. Modification of tools, of this type, was, pretty clearly, unacceptable to our advisers. Enough said. Not so trivial, and from the Shed's own resources, is the upgrade of our metal cutting bandsaw... the arrival of which is pictured below. The machine is now installed and fully operational.





Our walking group (some pictured) are looking forward to the cooler weather. Join them on Thursdays at the Shed around 9AM

Electrical Upgrade

Quite a lot happening on this front, but first, the reasons.

It is no news to members who have photovoltaics, that the feed-in tariff is substantially reduced.

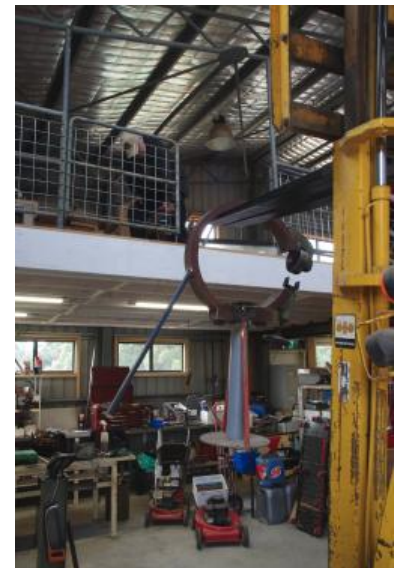
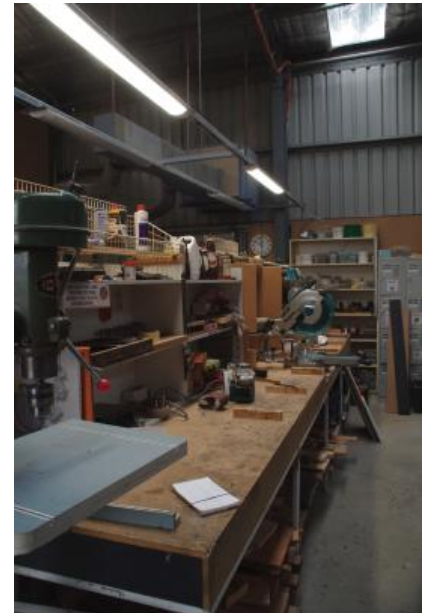
Your Committee has planned for this for some time and on three fronts.

Firstly, the power hungry bay lights have already been replaced with LEDs. Secondly, to encourage better lighting in the Small Engines and Fitting and

Turning areas, four (to become five) windows have been installed and lastly, all of our fluorescents are being replaced with LEDs.

Once our electricians have finished, we will be calling for volunteers to make good the plasterwork in the house areas.

Check out the pictures for what has been accomplished already. (Oh and the English Wheel has gone upstairs.)



Musicians Wanted

Paul Baker, well known local (and jovial) Chef has a not-so-hidden talent. He is a musician with ambition.

If you, like Paul are a budding or accomplished musician with a desire to perform in a group, contact Paul.

We have a rehearsal venue and Paul is willing to coordinate to get this idea off the ground. Who knows how far this one will fly?

CONTACT DETAILS
Mobile: 0401 523 066
Email: pauly64@live.com



Fire Precautions



While we are, hopefully, well past the recent fire season a recent inspection of the roof, guttering and photo-voltaics revealed an undesirable accumulation of combustibles. Removal of these meant that the Shed, over the longer term, required safe and convenient access to the roof. After considerable consultation with our resident tradies, your Committee decided to purchase an extension ladder together with a couple of additional features to ensure the safety of our volunteers. Pictured, our president and small engines guru checking out the purchase. Not a hobby which your author feels he wants to undertake, but, for the future preservation of the Shed, a worthwhile and prudent acquisition.

Premier's support

The opportunity is taken here to formally acknowledge the generosity of the Department of Premier and Cabinet. Our regular monthly BBQ had been getting by using second (or possibly third) hand equipment. The seating was "remaindered" from the local primary school -- not best suited to the needs of

our attendees -- and the BBQ itself donated, as surplus to his needs, by a generous member. One aspect had generated some discomfort and the other was hard pressed to meet our needs so your Committee appealed to Premier Will Hodgman whose Government have, over its incumbency, been strong supporters of your

Shed and, indeed, the Men's Shed Movement in Tasmania. Thanks to this generosity we have been able to acquire a full set of bistro chairs (to the relief of attendees on the last Friday of the month) and to our stalwart volunteer apron wearing BBQers.



Garden report

Our Shed Garden has had a splendid growing year and is now bedded down for winter. For those of our members who missed out on tasting the organically grown produce, we can only suggest that you look forward to next season. Harvest produce was set

out for sale each Monday and those in luck, or early, savoured old standards like potatoes and carrots and some slightly less traditional items like salad turnips. Indeed the tomatoes were something to rave about and only a worry about spelling rhubarb stops me from really going to town.

Congratulations and thanks to Lawrie as, from the overall Shed financial viewpoint, the garden more than paid its own way which does suggest that a home vegetable patch is worthwhile from both the taste and money aspects. Is anyone interested in organic gardening for themselves?



Life Award 2019

Relationships Australia Tasmania today announced the winners of the 2019 LiFE Awards, recognising contribution to suicide prevention in Tasmania. Channel Men's Shed Inc. has won the "Communities in Action for Suicide Prevention" award.

From the Relationship Australia's Media release

Over the past six years, the organisation has provided a place for both men and women to come together and form friendships and support each other and their community. The Shed has provided many retired people, with purpose and companionship and supports those who are unemployed, helping them to gain confidence and seek supports. The Shed has taken a pro-active approach to supporting health and mental health and in collaboration with local service providers has hosted annual health check days for the past 3 years.



Channel Men's Shed Inc

PO Box 318 OR
24 Van Morey Road
MARGATE Tas 7054

phone: 03 6267 1696

email: secretary@channelmenshed.org.au
web: <https://www.channelmenshed.org.au/>

L to R Dr. Michael Kelly (Chair, Tasmanian Suicide Prevention Community Network), Debbie Evans (CEO, Lifeline Tasmania-award sponsor), Lyndley Chopping (Committee Member, Channel Men's Shed), Peter Norris (President, Channel Men's Shed), Michael Ferguson (Minister for Health)